

ACCULINK® 3165

T1/FT1 DSU/CSU



BENEFITS

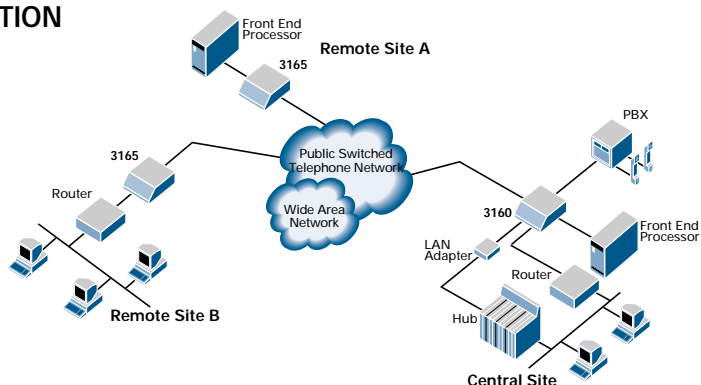
- SOFTWARE-DOWNLOADABLE ARCHITECTURE PROVIDES EASY PRODUCT ENHANCEMENTS TO MEET EVOLVING CUSTOMER APPLICATIONS
- REMOTE OPERATION THROUGH AN INTEGRAL V.22bis MODEM ENHANCES SERVICEABILITY AND IMPROVES UPTIME
- INTEGRAL ACCULINK 3150 D4/ESF CSU ENSURES OPTIMUM PERFORMANCE AND IN-SERVICE DIAGNOSTICS
- MULTIPLE MANAGEMENT METHODS (LCD FRONT PANEL, ASCII, IN-BAND, OUT-OF-BAND, EXTERNAL LAN ADAPTER, AND DAISY CHAINING) OFFER FLEXIBILITY TO MATCH INSTALLATION AND APPLICATION REQUIREMENTS
- PEACE OF MIND KNOWING YOU HAVE SELECTED ONE OF THE MOST RELIABLE SNMP DSU/CSUs IN THE INDUSTRY

Paradyne's ACCULINK® 3165 Data Service Unit/Channel Service Unit (DSU/CSU) is the ideal solution for cost-effective, high-speed access to LAN/WAN applications. Flexible and economical, the 3165 connects to T1 and Fractional T1 network services from Nx56/64 Kbps speeds up to 1.544 Mbps. The ACCULINK 3165 delivers affordable access to the high-bandwidth requirements of LAN inter-networking, video conferencing, CAD/CAM, data and image applications.

Providing high-speed access, coupled with flexibility and control, the ACCULINK 3165 can be configured for point-to-point applications, or using Fractional T1 topologies, point-to-multipoint applications. ACCULINK 3165 accesses public network services such as frame relay, T1 and Fractional T1, value-added networks, and private backbone networks.

Easy updating and enhancements to functionality are benefits of the ACCULINK 3165's software-downloadable architecture. A menu-driven LCD front panel and ASCII interface are provided on the 3165 for control of simplified setup, diagnostics, and management. For comprehensive networks that require a standard and open network management architecture, Simple Network Management Protocol (SNMP) is standard. An integral V.22bis modem for remote operation is provided.

APPLICATION



The above application is showing a point-to-multipoint network taking advantage of Fractional T1 technology, utilizing an ACCULINK 3160 DSU/CSU at the central site and an ACCULINK 3165 at each of the remote sites. At the central site, the 3160 is providing connectivity to support the FEP-to-FEP application to remote Site A, LAN-to-LAN application to remote Site B, and providing voice traffic from the PSTN to the PBX via a DSX-1 connection. This is a very cost-effective approach to maximizing the usable bandwidth available on the T1 access.

(Cont. on back)

FEATURES

- DIRECT SNMP MANAGEMENT
- T1 AND FRACTIONAL T1 SUPPORT
- SINGLE DTE PORT
- SUPPORTS Nx56K AND Nx64K APPLICATIONS
- 2x16 LCD DISPLAY FOR CONFIGURATION AND MANAGEMENT
- REMOTE OPERATION AND "CRY FOR HELP" DIAL-OUT THROUGH INTEGRAL V.22bis MODEM
- ENHANCED ASCII USER INTERFACE (VT-100)
- TELNET
- SLIP AND PPP MANAGEMENT PROTOCOL
- MIB II AND ENTERPRISE MIB SUPPORT
- NON-DISRUPTIVE IN-BAND MANAGEMENT OVER T1 WITH FACILITY DATA LINK (FDL)
- NON-DISRUPTIVE IN-BAND MANAGEMENT OVER FRACTIONAL T1 WITH EMBEDDED DATA LINK (EDL)
- BANTAM TEST JACKS
- SUPPORTS WINDOWS-BASED FRONT PANEL EMULATION SOFTWARE (FREE WHEN ORDERED WITH UNIT)
- 2-YEAR WARRANTY, RETURN TO FACTORY
- OPTIONAL GUI SNMP APPLICATION FOR HP OPENVIEW (UNIX AND WINDOWS) AND NETVIEW AIX

ORDERING INFORMATION

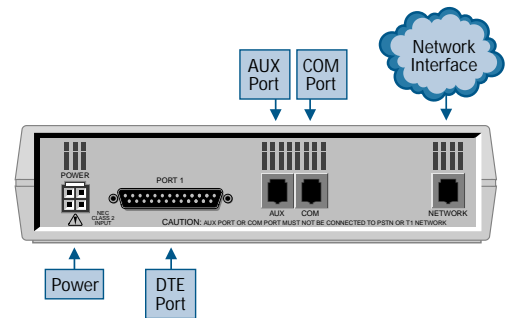
Description	Model Number
ACCULINK 3165 DSU/CSU	
Standalone 3165 T1/FT1 DSU/CSU	
Includes: T1 facility cable (3100-F1-500) ...	3165-A2-210
Cables	
V.35 DTE Adapter Cable	3100-F1-570
RS-449/422 DTE Adapter Cable	3100-F1-580
X.21 DTE Adapter Cable	3100-F1-571
COM Port-to-PC Cable	3100-F1-550
T1 Line Interface Cable, RJ48C-to-DA15P (Canada)	3100-F1-510
COM Port-to-Terminal/Printer Cable, 8-pin modular to DB25P	3100-F1-540
Mounting Hardware	
Wall-Mount/Rack-Mount Adapter	3100-F1-400
Optional LAN Adapters	
Ethernet LAN Adapter (external)	21579
Token Ring LAN Adapter (external)	21576
Front Panel Emulation Software	
Front Panel Emulation Software for Windows (no cost)	3100-C1-010

(Cont. from front)

At remote Site A, an ACCULINK 3165 is supporting the FEP-to-FEP application over a Fractional T1 facility. At remote Site B, an ACCULINK 3165 is supporting the LAN-to-LAN application over a Fractional T1 facility. Using Paradyne's Embedded Data Link (EDL), in-band SNMP management is provided to the remote sites without an external connection to the router or external LAN adapter. This affords complete non-disruptive management, testing, and configuration via MIBs, Telnet, or Paradyne's optional GUI SNMP Application for HP OpenView (UNIX and Windows) and NetView AIX.

3165 REAR PANEL PORTS AND CONNECTORS

The 3165 DSU/CSU offers one DTE port on an EIA-530 interface (optional V.35 and RS-422/449 cables available). The 3165 supplies a COM port for connection to a PC for front panel emulation software, access to the user-friendly ASCII interface for local configuration and management, or connection to a printer. The COM port is also used for connection to a router port or external LAN adapter for connection to an SNMP management system. The AUX port is supplied for connection to an external LAN adapter for SNMP or Telnet, or for daisy chaining multiple 316X DSU/CSUs to an external LAN adapter.



3165 SPECIFICATIONS

Power Requirements

AC Power: 115 VAC (104-132 VAC, 57-63 Hz)
DC Power: +24 VDC (20 to 32 VDC),
-48 VDC (-38 to -60 VDC)

Power Consumption and Dissipation

12.0 Watts, 55.0 BTU/hr @ 115 VAC
8.5 Watts, 29.0 BTU/hr @ +24 VDC
8.5 watts, 29.0 BTU/hr @ -48 VDC

Network T1 Interface

Physical Interface (USA): RJ48J
Physical Interface (Canada): CA81A using
adapter cable
Framing Format: D4, ESF
Coding Format: AMI, B8ZS
Line Build-Out (LOB): 0.0 dB, -7.5 dB, -15 dB,
-22.5 dB

ANSI PRM: Selectable
Bit Stuffing: FCC Part 68, AT&T TR 62411
Yellow Alarm Generation: Selectable

Loopbacks

Standard: AT&T TR 54016, AT&T TR 62411,
ANSI T1.403.1989

Additional: RLB (Repeater Loopback), DLB (DTE Loopback), V.54 Loop 2 and Loop 3, ANSI T1.403 Annex B Fractional T1 Loopback

DTE Port Interface

Standard: EIA-530A (V.35, RS-449, and X-21 using
adapter cables)
Rates: Nx64: 64K - 1.536 Mbps
Nx56: 56K - 1.344 Mbps

Clocking Sources

T1 network interface, DTE Port, internal clock

Physical Dimensions

Height: 2.13 inches (5.4 cm)
Width: 7.63 inches (19.4 cm)
Depth: 12.13 inches (30.8 cm)

Weight

2.4 pounds (1.1 kg)

Environment

Operating Temperature: 32° F to 122° F
(0° C to 50° C)
Storage Temperature: -4° F to 158° F
(-20° C to 70° C)
Relative Humidity: 5% to 95% (noncondensing)
Shock and Vibration: Withstands normal shipping
and handling

For additional information on this or any Paradyne product or service, contact the office nearest you. Or, dial toll-free (USA and Canada) 800 482-3333 or call 813 530-8623. Fax (USA) 813 530-2103.

Toronto 905 709-5000 fax: 905 709-3469
Europe 44-1-753-515000 fax: 44-1-753-550011
Hong Kong 852 2543-0083 fax: 852 2541-3767
Singapore 65 355-5230 fax: 65 355-5244

Montreal 514 288-0001 fax: 514 288-1246
Japan 81 3-5541-6630 fax: 81 3-5541-6631
Latin America 813 530-8358 fax: 813 532-5240
Visit the Paradyne Power Pages at <http://www.paradyne.com>

Specifications subject to change without notice. Printed in U.S.A. ©Paradyne Corporation 1997.

ACCULINK is a registered trademark of Paradyne Corporation. PARADYNE is a trademark of Paradyne Corporation. All products or services mentioned are the trademarks, service marks, registered trademarks, or registered service marks of their respective owners.

